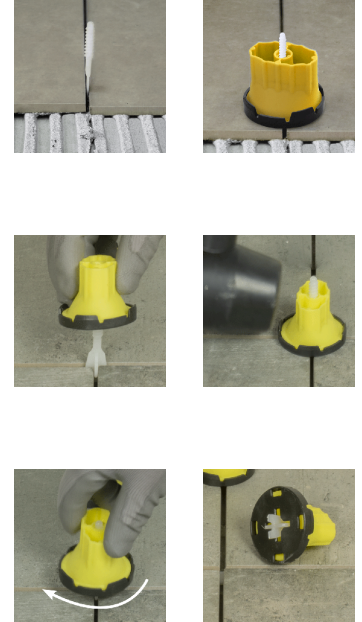


### SIMPLY LEVEL - SINGLE ELEMENTS



Code	Commercial Description	Dimensions	Conf.	Pallet	Selling Unit
TER04-4410DK	Simply Level Cylinder with anti scratch pad- 50 pc...	--	1	150	CF
TER04-4401DK	Linear spacer screw 1 mm for cylinder system	1 mm	1	375	CF
TER04-44015DK	Linear spacer screw 1,5 mm for cylinder system	1,5 mm	1	375	CF
TER04-4402DK	Linear disposable screw 2 mm for tiles from 3 to 2...	2 mm	1	375	CF

TER04-44025DK	Linear disposable screw 2.5 mm for tiles from 3 to...	2,5 mm	1	375	
TER04-4403DK	Linear spacer screw 3 mm for cylinder system	3 mm	1	375	CF
TER04-4404DK	One-way screw 4mm cylinder system - 100 pcs/envelo...		1	375	CF
TER04-4421DK	Cross spacer screw 1 mm for cylinder system	1 mm	1	375	CF
TER04-4422DK	Cross spacer screw 2 mm for cylinder system	2 mm	1	375	CF
TER04-4423DK	Cross spacer screw 3 mm for cylinder system	3 mm	1	375	CF
TER04-4431DK	T shape spacer screw 1 mm for cylinder syste...	1 mm	1	375	CF
TER04-4432DK	T shape spacer screw 2 mm for cylinder syste...	2 mm	1	375	CF
TER04-4433DK	T shape spacer screw 3 mm for cylinder syste...	3 mm	1	375	CF

## Description

Simply Level System is: · Single Bags composed of 100 disposable screws or 50 cylinders or 50 anti-scratch proof disk. A system composed of 2 elements (cylinder and spacer screw) that assembled and adjusted, allows, to remove any difference between tile and tile during the laying, obtaining a coplanar and equidistant result without any lippage. Spacer Screw are available for 1, 1.5, 2, 3 mm grout joints. Cross and T Spacer Screw are available for 1, 2, 3 mm grout joints. Scratch Proof Disc is an optional supplied in 50 pcs./bag.

## Material

Made of Recycled plastic material.

## Use

Leveling system and spacer for floor and wall tiles of various sizes and thicknesses.

