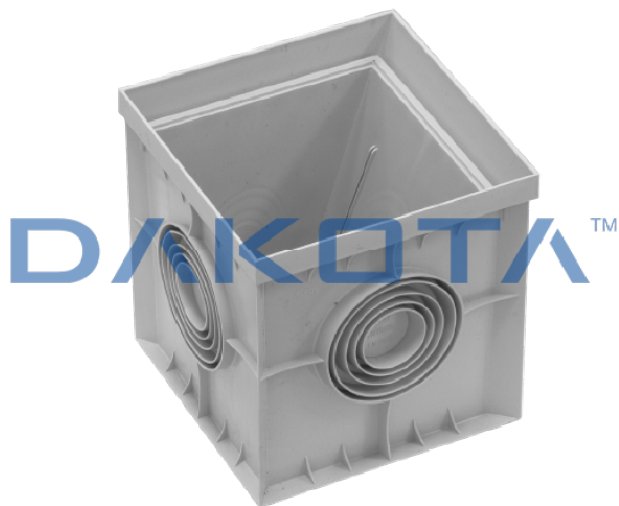


STANDARD CATCH PIT



Code	Commercial Description	Dimensions	Conf.	Pallet	Selling Unit
POZ01-1372E	Standard Catch Pit	200 x 200 mm	0	180	PZ
POZ01-1373E	Standard Catch Pit	300 x 300 mm	0	48	PZ

Description

The "Standard" drainage inspection chamber, also known as a catch basin or catch pit, is available in various sizes, from 200 x 200 and 300 x 300 mm, grey colour. Main characteristics: Light weight for a easy transport, positioning and installation, even by a single person; High resistance, thanks to the reinforcements and ribs on the sides; Pipes of every sizes can easily fit thanks to the special pre-cut concentric shape of the holes on the sides. Compatible with relative PP inspection chamber cover.

Material

Made of PP (polypropylene).

Use

It is used as an alternative to traditional concrete catch basins.

Accessories

Code	Commercial Description	Dimensions	Conf.	Pallet	Selling Unit
POZ06-1378	Siphonated Plate	200 x 200 mm	0	9000	PZ
POZ06-1379	Siphonated Plate	300 x 300 mm	0	2040	PZ
POZ06-1380	Siphonated Plate	400 x 400 mm	0	900	PZ
POZ06-1389	Siphonated Plate	550 x 550 mm	0	480	PZ
POZ07-6821N	Bell Siphon	300 x 300 mm	0	112	PZ
POZ07-6822N	Bell Siphon	400 x 400 mm	0	54	PZ
POZ05-1376	Catch Pit Extension 300 x 300mm, h.100mm	300 x 300 mm	0	120	PZ
POZ05-1377	Catch Pit Extension 400 x 400mm, h.100mm	400 x 400 mm	0	60	PZ
POZ05-1377B	Catch Pit Extension 550 x 550mm, h.130mm	550 x 550 mm	0	44	PZ

